

Dialogannahme

# WHEEL ALIGNMENT

Version 2022.11.15 – Prices on request

## Mechanical turntable | Steel | with Nonius

370 x 350 x 42mm, max. load: 800kg, turnplate diameter: 308mm Matching filling pieces: 1690702157

**Article number: 1 690 311 002**



## Filling piece | for steel turntable 1690311002

*1x Filling piece, required quantity: 2*

**Article number: 1 690 702 157**



## Q.Lign - Accessories



### ADAS target boards | for Q.Lign

Article number: 1 690 200 013



### Powerbox for Q.Lign

Article number: 1 690 201 029



### Power connection cable 10 m

Article number: 1 690 203 025



### Power connection cable 15 m

Article number: 1 690 203 041



### Duo-battery charging station for Q.Lign | incl. accessories

Article number: 1 690 201 069



### Battery for Q.Lign | Li-Ion | 99 Wh

Article number: 1 690 203 053

### Power supply for Q.Lign Accessories | 19 V RRC

Article number: 1 693 770 648



### Emergency power box for Q.Lign

Article number: 1 690 201 030



### Lift adaptation for Q.Lign

Article number: 1 690 201 035



### Tablet for Q.Lign | Android | 10.1"

Article number: 1 693 770 644



### Mouse and keyboard | Wireless

Article number: 1 693 770 634



### Wall board for Q.Lign

Article number: 1 690 201 054



### Printer for Beissbarth trolleys

Article number: 1 693 770 415



### Trolley with 27"monitor | for Q.Lign

Article number: 1 690 201 055



### Adapter set Q.Grip | for Q.Lign | 4 pcs.

Article number: 1 690 101 010



### Mechanical turntable | Steel | with Nonius

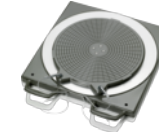
Article number: 1 690 311 002



### Filling piece | for steel turntable

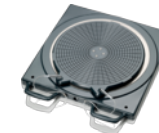
1690311002

Article number: 1 690 702 157



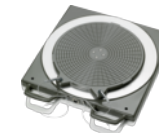
### Mechanical aluminum turntable Standard

Article number: 1 690 501 001



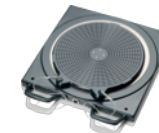
### Mechanical aluminum turntable Precision

Article number: 1 690 401 028



### Electronic aluminum turntable without connecting cable | Standard

Article number: 1 690 401 011



### Electronic aluminum turntable without connecting cable | Precision

Article number: 1 690 401 013



### Connecting cable for electronic turntables

Article number: 1 690 403 001



### Filling piece for aluminum precision turntable

Article number: 1 690 102 041



### Filling piece for aluminum turntable

Article number: 1 690 702 082



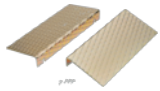
**Protective rubber cover for aluminum turntable**

Article number: 1 690 402 001



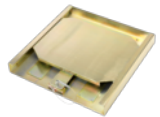
**Drive-on ramps for two aluminum turntables**

Article number: 1 690 701 052



**Drive-on ramps for turntables and sliding plates**

Article number: 1 690 401 008



**Sliding plate for rear axle | short**

Article number: 1 690 401 003



**Sliding plate for rear axle | long**

Article number: 1 690 401 004



**Magnetic clamps for wheel bolts | 75mm**

Article number: 1 690 701 508



**Magnetic clamps for wheel bolts | 100mm**

Article number: 1 690 701 521



**Extension magnet for magnetic holder | 100 mm | 1 pc.**

Article number: 1 690 701 523



**Central clamp Porsche 911 GT3 and Turbo**

Article number: 1 690 380 002



**Self-centering quick clamp for Porsche**

Article number: 1 690 380 010



**Self-centering quick clamp for Porsche**

Article number: 1 690 301 003



**Central clamp Porsche Carrera GT**

Article number: 1 690 301 002



**Self-centering quick clamp for Tesla**

Article number: 1 690 380 161



**Self-centering quick clamp for Ferrari**

Article number: 1 690 381 299



**Self-centering quick clamp | for Lamborghini**

Article number: 8 900 380 016



**Quick clamp Mercedes Benz | OEM**

Article number: 1 690 801 002



**Quick clamp BMW | OEM**

Article number: 1 690 801 001



**Distance bolts for quick clamp Mercedes Benz | 100 mm**

Article number: 1 690 801 007



**Distance bolts for quick clamp BMW | 120 mm**

Article number: 1 690 801 003



**Distance bolts for quick clamp Mercedes Benz and BMW | 125 mm**

Article number: 1 690 401 019



**Multi-Fit wheel clamp with standard claws | 13 - 22" | 4 pcs.**

Article number: 1 690 311 112



**Multi-Fit wheel clamp with standard claws | 13 - 22" | 1pc.**

Article number: 1 690 311 089



**Extension set for Multi-fit clamps | 23 - 28"**

Article number: 1 690 311 113



**Set softline claws for 1 x Multi-fit clamp | Softline rims**

Article number: 1 690 311 164



**Set truck claws for 1 x Multi-fit clamp | Truck**

Article number: 1 690 311 115



**Brake pedal depressor**

Article number: 1 690 401 006



**Steering wheel holder**

Article number: 1 690 401 007



**Toe press bar for Mercedes Benz**

Article number: 1 693 600 001



**Ballast bag 5 kg**

Article number: 1 693 740 001



**Ballast bag 8 kg**

Article number: 1 693 740 693



**Ballast bag 10 kg**

Article number: 1 693 740 002



**Ballast bag 20 kg**

Article number: 1 693 740 003



**Wheel chock set 2 pcs.**

Article number: 1 692 000 156



**Set of Drive-on ramps | for RaceScales**

Article number: 1 692 000 221

**Manual inclinometer Pro360 for Mercedes-Benz | 9V**

Article number: 1 693 770 657



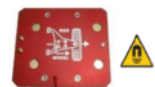
**Romess inclinometer with standard adapter | 230V**

Article number: 1 693 770 002



**Romess data transfer and charging unit | 230V**

Article number: 1 693 770 003



**Replacement standard adapter | for Romess inclinometer**

Article number: 1 693 770 160



**Romess adapter set for M-Class type W163**

Article number: 1 690 401 016



**Romess adapter set for Vaneo type W414**

Article number: 1 693 770 004

**Romess steering wheel level gauge with Bluetooth | 230V**

Article number: 1 693 770 619

**Dust cover target board | Q.Lign**

Article number: 1 690 202 155

# IMPORTANT NOTES

- Please notice: This list contains spare parts, too.
- Without instruction or assembly.
- Delivery ex works including packaging.

## VERSION 2022.11.15 – PRICES ON REQUEST

- Starting from now all previous lists will lose their validity.
- Please read our general terms and conditions in the latest version before ordering; to be found under [www.beissbarth.com](http://www.beissbarth.com).

**Order number** 1 693 602 008 **Print norm** BB XXX / XX.XX.2020 DE · Subject to technical and program changes, errors excepted.

### Beissbarth GmbH

Hanauer Straße 101  
80993 Munich, Germany  
[sales@beissbarth.com](mailto:sales@beissbarth.com)  
[www.beissbarth.com](http://www.beissbarth.com)

Telefon: +49-(0)89-14901-0

Telefax: +49-(0)89-14901-246

